

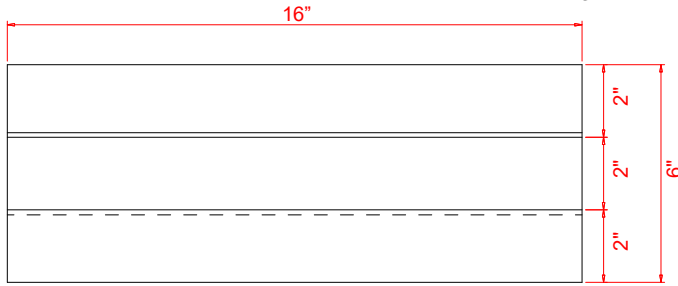
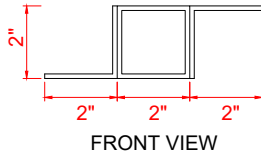
Z-Brackets and Clips

1. This mount is intended for mounts with masonry on sides and below EMC, and provides an overall depth of as little as 18.25" and as much as 28.25".
2. Brackets & Clips will not be pre-drilled, installer to field provide holes based on site conditions including overall depth desired.
3. Minimum distance between angles on back of EMC is 2".
4. Requires a minimum of a 2" opening above the EMC for ventilation.
5. Maximum distance between side masonry and EMC sides is 1".

16" LONG Z-BRACKET

(Qty. 2 included)

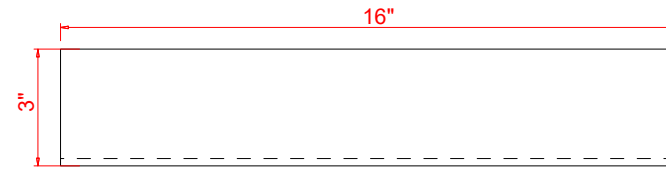
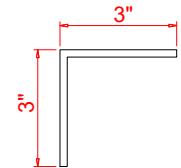
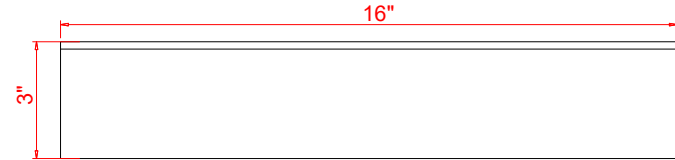
2"X2"X1/8" STEEL ANGLES WELDED
TO 2"X2"X1/8" STEEL TUBING



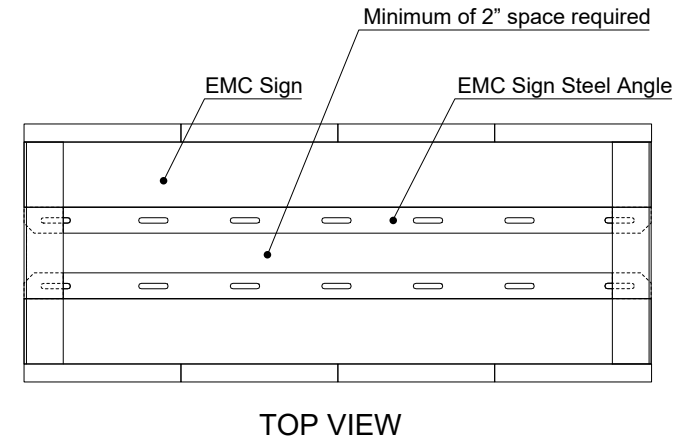
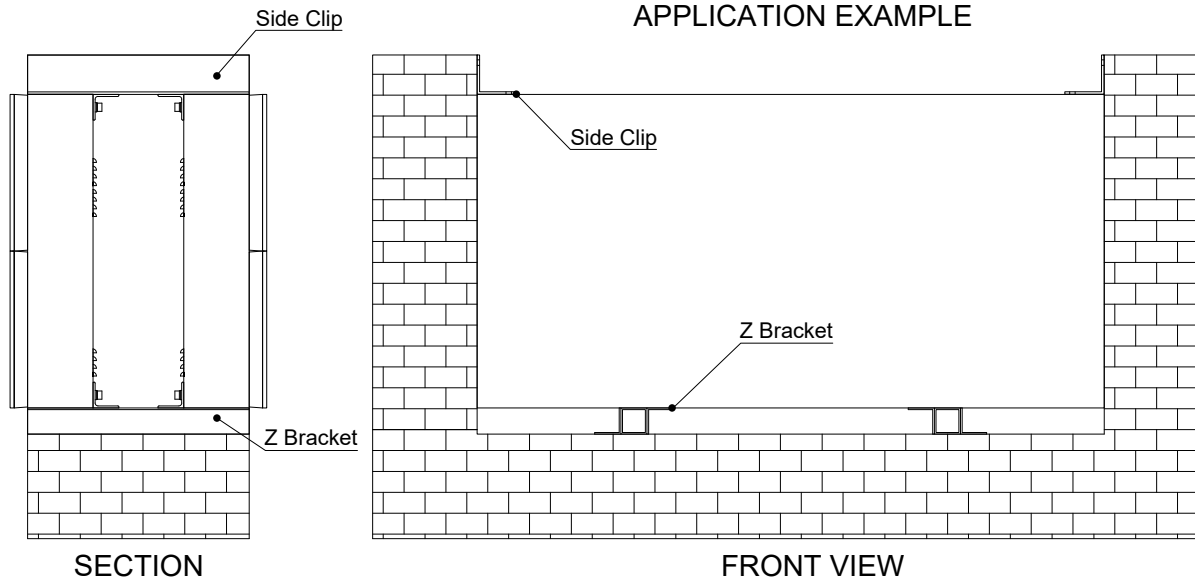
16" SIDE CLIP

(Qty. 2 included)

3"X3"X3/16" STEEL ANGLE



APPLICATION EXAMPLE



IMPACT
LED SIGNS